

# Vode Revit User Guide

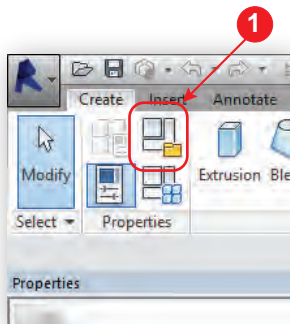
## Adding Light to Vode Revit Files

Before you begin:

- 1: Download the Revit file for the desired fixture type and mounting from the Vode Website **Resources** tab.
- 2: Download the IES .pdf and .ies Light files for the fixture optics and output desired from the Vode Website **Resources** tab.
- 3: Open the Revit Family file. NOTE: Vode Revit files are compatible with Revit 2016 or newer.

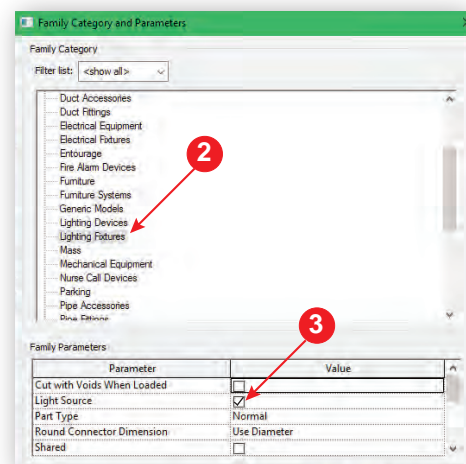
### Step 1: Turn on Light Source

Click the **Family Category and Parameters** icon.



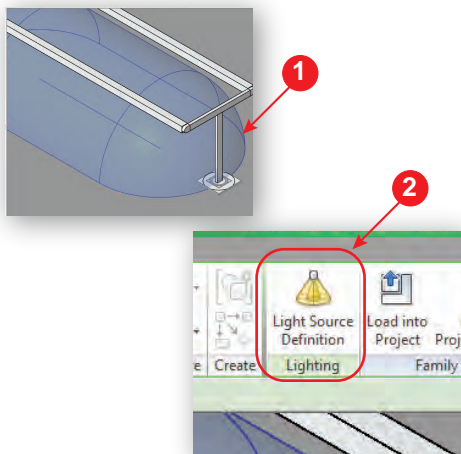
Locate the **Lighting Fixture** menu.

Check the **Light Source** box to turn on a generic light in the model. Click OK.

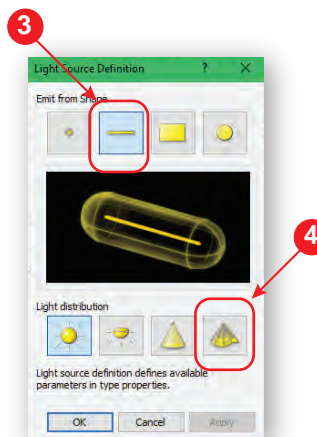


### Step 2: Add IES File

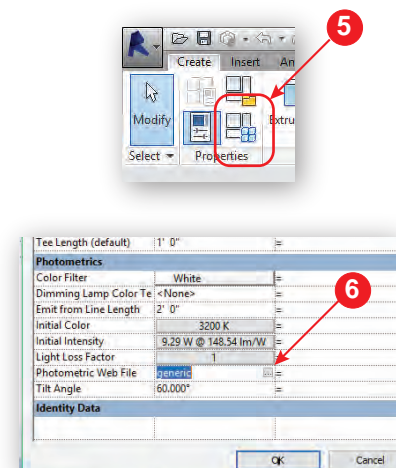
Select the light source (it will turn from yellow to blue) that was added to the file. This will allow you to select the **Light Source Definition** menu.



Change the light source shape to **Linear** and light distribution to **Photometric Web**.



Click the **Family Types** icon and add the desired IES file in the **Photometric Web File** line.



### Step 3: Setting Up Light Photometrics

In **Family Types** menu, enter lighting photometrics data from the downloaded IES .pdf. Set the **Initial Color** and **Initial Intensity**.

**Initial Intensity:**  
Enter the **Efficacy** and **Watts per Foot** from the IES pdf.  
**NOTE:** Be sure to multiply the Watts by the length of the rail.

Tee Length (default)	1' 0"	=
<b>Photometrics</b>		
Color Filter	White	=
Dimming Lamp Color Te	<None>	=
Emit from Line Length	2' 0"	=
Initial Color	3200 K	=
Initial Intensity	9.29 W @ 148.54 lm/W	=
Light Loss Factor	1	=
Photometric Web File	generic	=
Tilt Angle	60.000°	=
<b>Identity Data</b>		
OK		


**Initial Color:**  
Select the desired color temperature: 2700K, 3000K, 3500K or 4000K

### Using Vode Revit Files

Vode Revit files are parametric with mounting, rail and arm length options built-in. After inserting the **Vode Revit Family** file into the building model, select the light fixture. This will open the **Properties** menu.

**Graphics:**  
Some models have mounting options under the graphics menu.  
**NOTE:** Table anchor is only for Table Mounted 107 systems.

**Dimensions:**  
All length options are located under the dimension menu. Consult the **Vode Spec Guide** for standard lengths. **NOTE:** Vode supplies custom lengths upon request.

 107-BX-XX-WA_CA_TA-Tee	
Lighting Fixtures (1) <span>Edit Type</span>	
Elevation	4' 0"
<b>Graphics</b>	
Large Round Canopy	<input checked="" type="checkbox"/>
Large Square Canopy	<input type="checkbox"/>
Small Round Canopy	<input type="checkbox"/>
Small Square Canopy	<input type="checkbox"/>
Table Anchor (only for table mount)	<input type="checkbox"/>
<b>Electrical - Lighting</b>	
Calculate Coefficient of Utilization	<input type="checkbox"/>
Coefficient of Utilization	
Switch ID	
<b>Electrical - Loads</b>	
Panel	
Circuit Number	
<b>Dimensions</b>	
Arm Length	1' 0"
Fixture Length	4' 0"
Tee Length	1' 0"
<b>Identity Data</b>	
Image	
Comments	
<a href="#">Properties help</a> <span>Apply</span>	